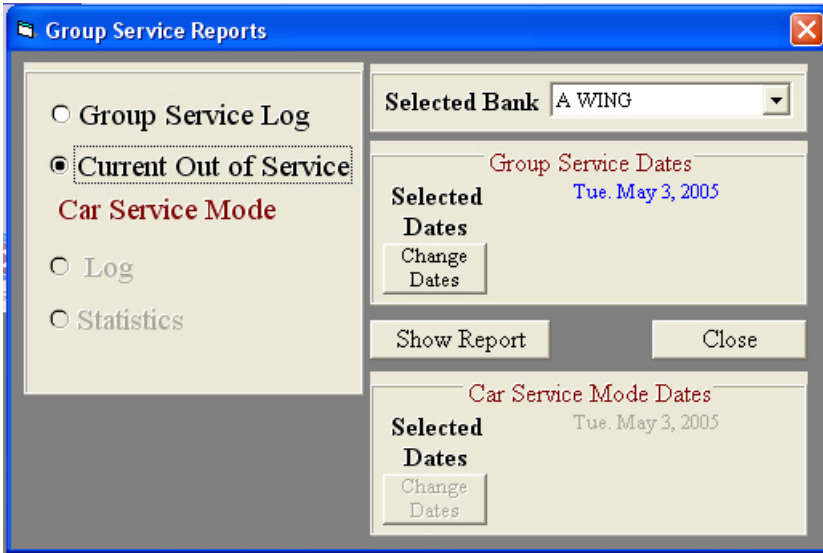


IDS Lift-Net Tech Support

Cars Currently Out of Service Report

The Currently Out of Service report will produce a list of all elevators and escalators on the Lift-net Monitoring network.
 The cars Currently Out of Service report is accessed from the Group Service Reports menu.



The Currently Out of Service report provides information on the location, operational and door status of all elevators on the Lift-net network.
 The following form will print automatically whenever the elevator system goes on Fire Service or Emergency Power operation. To print additional reports click on the Print button

